

vanlei万磊®



万磊 - 臻秀石

GRANITE STONE PAINT





扫描二维码
获取更多精彩内容

Cell phone Scan the QR code
Get more content

万磊 - 臻秀石

万磊于2008年推出点彩石艺(水包水)产品,即俗称的“水包水2D效果”,但其仿真度一般,因此在2012年得以“水包水+骨材”的形式改进,被称为“2D+”效果。2015年公司首次改良该效果,并达到3D仿真石平批效果,在同行及市场得到共识;时至今日,万磊全新推出一种<一枪喷涂成型>的水包砂3D+效果,并赋予“臻秀石”这个名字,如今臻秀石表面的仿石效果,其清晰度,仿真性能甚至具有可以媲美真正石材的魅力。

主要成分

高弹乳液、天然砂石粒(石粉)、无机填料、纯净水

施工方法

- 1、辊涂万磊专用抗碱底漆(或黑色底漆),要求均匀遮盖。
- 2、用专用喷枪喷涂主材1-2遍,先第一次薄喷,第二次满喷。
- 3、干燥后喷涂点彩石艺(砂状)有光(哑光)专用面漆。

产品特点

- A、纯水性配方,无辐射公害
- B、强耐水,强耐白,强耐候
- C、不泛白,不破点,不流挂
- D、高丰满度,高柔韧度,高仿石真度
- E、寿命长达三十年以上

适用范围

水泥砂浆面,石膏板,混凝土面,清水模面,金属板,预铸混凝土板,铝板等外墙建筑基面

配套工具

辊筒、专用喷枪

技术参数

点彩石艺(砂状) <喷涂>: 0.8-1.2kg/m² 面漆6-8m²/kg

执行标准

GB/T 9779-2015《复层建筑涂料》
GB18582-2020《建筑用墙面涂料中有害物质限量》

Granite Stone Paint

Wan Lei launched dazzle stone paint in 2008, which is commonly known as 2D effect stone paint. Due to the ordinary simulation effect, we committed to improve product quality and named 2D+ effect stone paint. In 2015, we developed real stone paint with 3D+ natural stone surface effect, which is very popular in building paint market. Now, Wan Lei released "Granite Stone Paint", which has the most similar appearance of natural granite stone and more charming than natural stone.

Main Raw Material

elastic emulsion, natural gravel(sand), inorganic materials, water

Application

1. Roll wanlei alkali-specific primer (or black color primer)
2. Spray the main material 1-2 coats with special spray gun
3. Spray specific top coating after dry

Characteristics

- A. Water based, no radiation hazards
- B. Waterproof, non-writhing, weather resistance
- C. Non-blushing, non-curtains
- D. Imitate natural granite, realistic 3D+ Effect
- E. Lifespan up to 30 years or more

Applicable scenarios

Cement surface, gypsum board, concrete surface, metal plate, aluminum plate and other exterior wall building

Application tools

Roller, special Spray Gun, Airless Sprayer

Technical Data

granite stone paint(spray): 0.8-1.2kg/m²
top coating: 6-8m²/kg

Industry standard

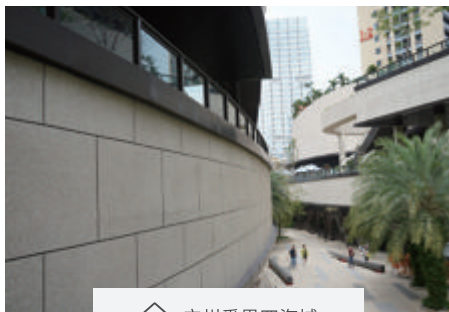
GB/T 9779-2015 Compound Building Coatings
GB18582-2020 Limit of Hazardous Substances in Wall Coatings for Building Use

臻秀石工程案例

GRANITE STONE PAINT CASE



广东广播电视台



广州番禺四海城



广州中颐永和海伦春天



杭州绿城九溪别墅



中天彩虹城



江门山湖雅苑



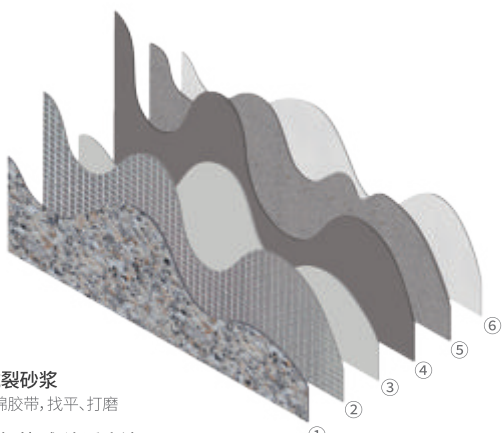
广西贵港博雄森纸业

标准施工流程

Construction Process

九大优势

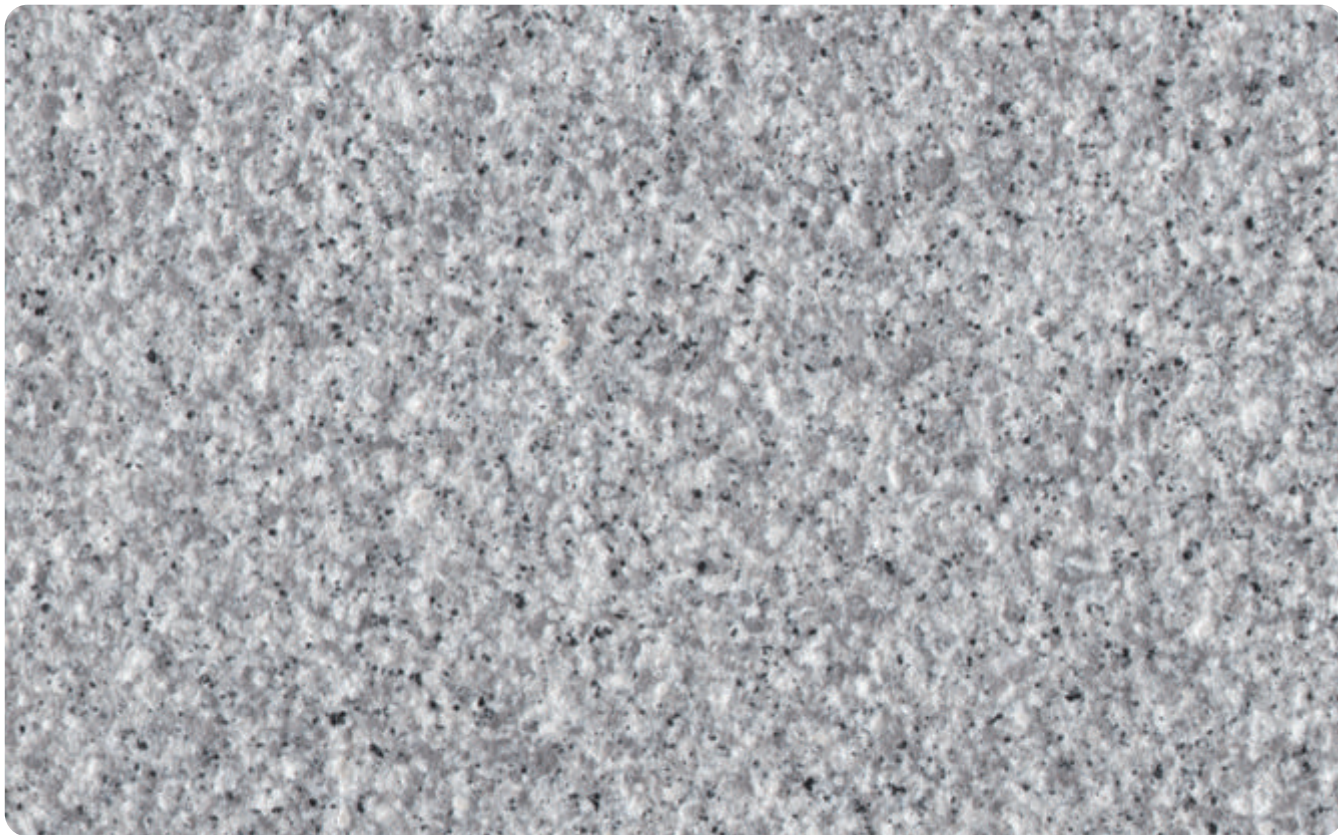
Nine advantages ,create healthy living space



- ①深槽+抗裂砂浆
2cm泡沫海绵胶带,找平、打磨
- ②底漆,选择抗碱/渗透底漆
金装渗透底漆,6-8㎡/kg,加水量<25%
- ③同色涂层,辊涂两遍
6-8㎡/kg,加水量<25%
- ④臻秀石,喷涂2遍
间隔>4h,0.8-1.2kg/㎡,加水量<10%
- ⑤磨边
撕缝,打磨,描边
- ⑥面漆,喷涂/辊涂一遍,表面保护
金装透明面漆,6-8㎡/kg,加水量<20%

- ① Deep groove + anti-cracking mortar
2cm foam sponge tape, leveling, sanding
- ② Primer, choose anti-alkali/penetrating primer
Gold penetration primer, 6-8 square meters/kg, water <25%
- ③ The same color coating, roller coating two times
6-8㎡/kg, adding water <25%
- ④ 8K HD stone, spraying 2 times
Interval >4h, 0.8-1.2kg/㎡, water addition <10%
- ⑤ Edge grinding
Tear seam, sanding, edging
- ⑥ top coat, spray/roller coating once, surface protection
Gold transparent top coat, 6-8 square meters/kg, adding water <20%

- | | | |
|---|---|---|
| 
保水性强
保水、锁水性强
Strong water retention | 
真石效果
真石肌理,效果逼真
Natural stone effect | 
无流挂
高稠低粘;施工不流挂
No curtains |
| 
无接茬
无缝施工,接口不接茬
No lapping defect | 
平滑丰满
漆膜收缩小,饱满圆润
Smooth and saturation | 
超低损耗
施工低损耗,涂布率高
Ultra low loss material |
| 
施工无阻力
施工无阻力,简便快捷
Easy to construct | 
长保不分层
保存不脱水,不沉淀
Long service life | 
防返白
干后遇水潮湿,不返白
No whitening |



白玉麻 - 8D008

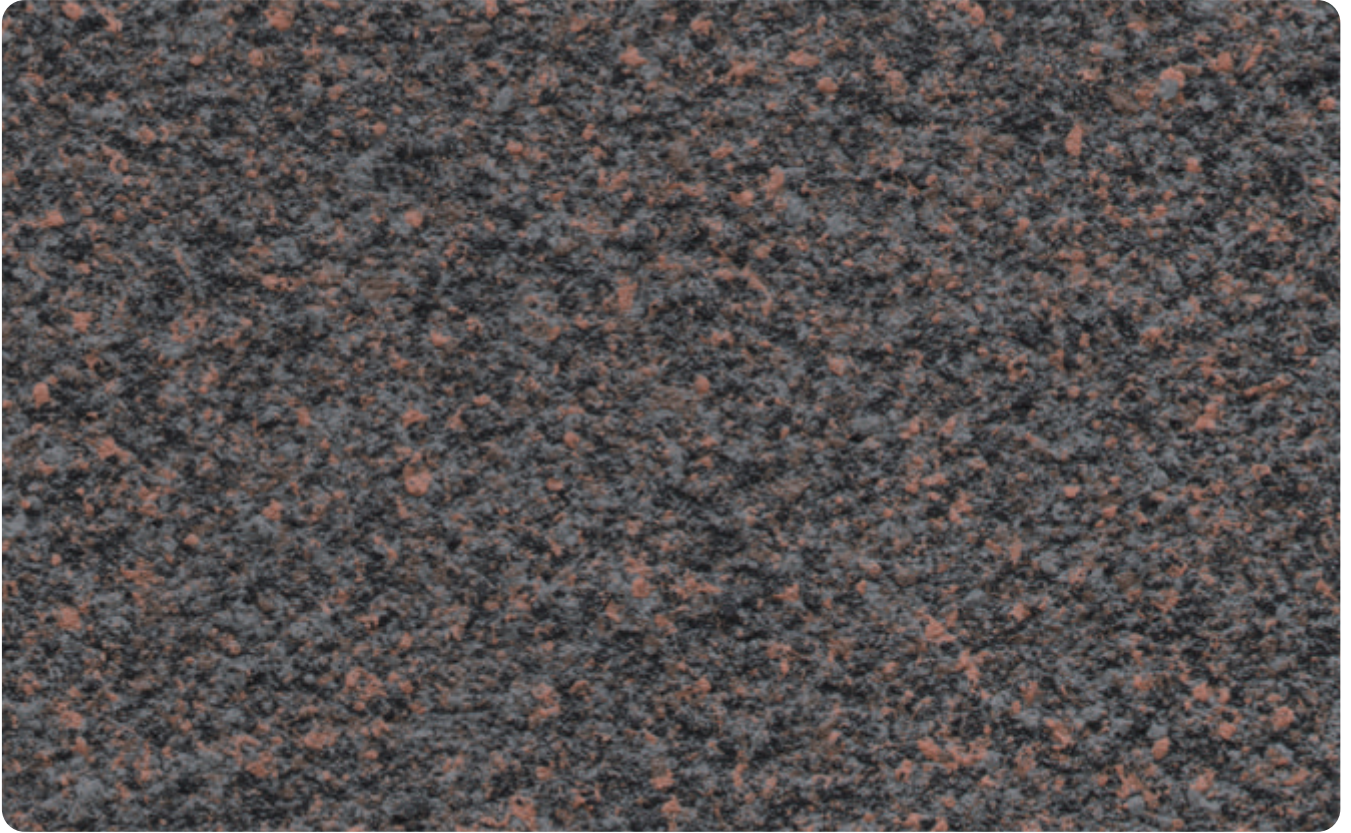


注意:由于石材来源于天然,颜色有少许偏差实属正常,间隔时间 提货,颜色有所偏差,恕不另行通知
Note: Due to the stone from natural sources, the color has a little deviation is normal, the interval between pickup, color deviation, without notice!

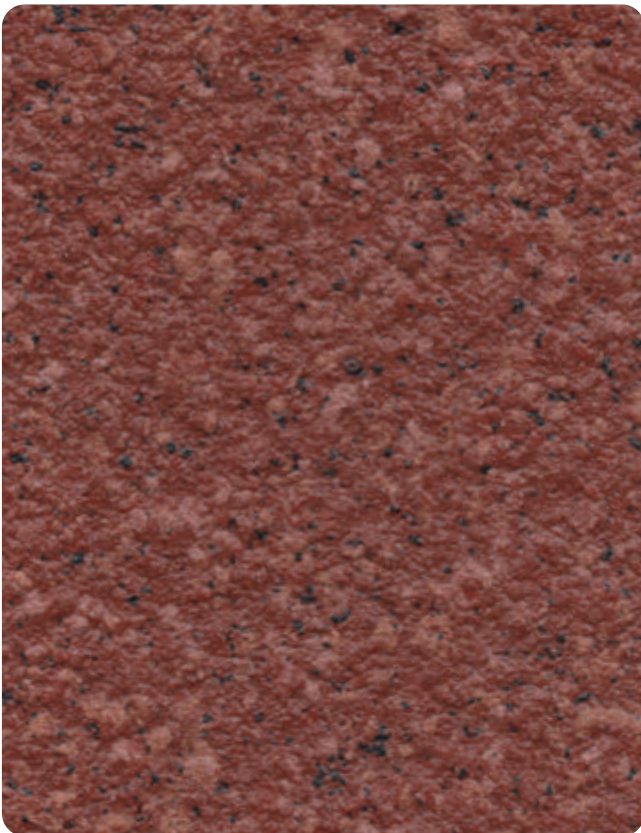


贵妃红 - 8D007

注意:由于石材来源于天然,颜色有少许偏差实属正常,间隔时间 提货,颜色有所偏差,恕不另行通知
Note: Due to the stone from natural sources, the color has a little deviation is normal, the interval between pickup, color deviation, without notice!



英国棕 - 8D001



印度红 - 8D002



大花绿 - 8D003

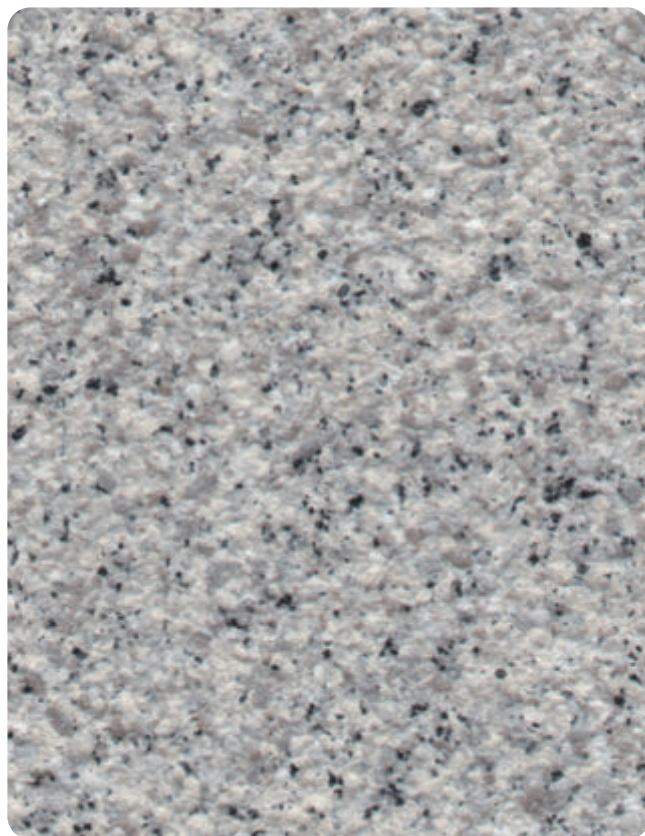
注意:由于石材来源于天然,颜色有少许偏差实属正常,间隔时间 提货,颜色有所偏差,恕不另行通知
Note: Due to the stone from natural sources, the color has a little deviation is normal, the interval between pickup, color deviation, without notice!



典雅石- 8D004



黄锈石 - 8D005



贵族白- 8D006

注意:由于石材来源于天然,颜色有少许偏差实属正常,间隔时间 提货,颜色有所偏差,恕不另行通知
Note: Due to the stone from natural sources, the color has a little deviation is normal, the interval between pickup, color deviation, without notice!

臻秀石 VS 真石材

Granite Paint VS Real stone

臻秀石

真石材

万磊建筑涂料有限公司

Foshan City Nanhai Wanlei Building Paint CO., LTD



广东生产基地（代码FS）

广东省佛山市南海区松岗万石工业区

广州分公司

广州市荔湾区羊城装饰材料市场172号

广西生产基地（代码QT）

广西壮族自治区贵港市覃塘区产业园甘化园区

南宁分公司

广西壮族自治区南宁市兴宁区快环建材市场

△ 注意

公司根据产品技术和发展需要，有权对产品配方进行更新升级，而不对外另行公布，请以最新样板册颜色为准，不便之处，敬请原谅！

4000-147-187 www.fswanlei.com